



Contact: Larissa Masny (585) 276-8934 / lmasnya@mag.rochester.edu
Patti Giordano (585) 276-8932 / pgiordano@mag.rochester.edu

February 24, 2010

MEMORIAL ART GALLERY EXHIBITIONS: 2010

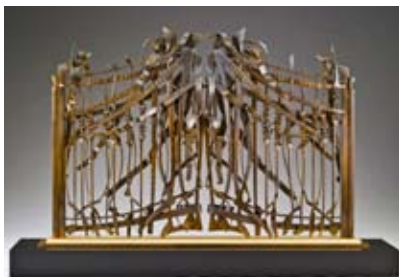


Through April 4, 2010

Fashioning Kimono: Art Deco and Modernism in Japan

Nearly 100 extraordinary examples of *kimono* created between the 1890s and the 1950s tell the story of how Japan's traditional national dress was influenced by technological advances in silk production and exposure to Western cultures. Included are everyday garments; intricately embroidered ceremonial robes; boys' *kimono* stenciled with cars, airplanes and battleships; and colorful examples with Art Deco patterns that heralded the emergence of Japan's "new woman." All are drawn from the famed Montgomery Collection in Lugano, Switzerland.

This exhibition is organized and circulated by Art Services International, Alexandria, VA. Support for the national tour and catalog has been provided by The E. Rhodes and Leona B. Carpenter Foundation. In Rochester, the exhibition is made possible by the Gallery Council of the Memorial Art Gallery and the Robert L. and Mary L. Sproull Fund.



May 2–June 27, 2010 (exhibition party May 1)

Albert Paley in the 21st Century

Rochester sculptor Albert Paley has earned an international reputation for his ability to manipulate cold, hard metal into organic, seemingly impossible forms. Over a career spanning more than three decades, he has completed more than 60 monumental commissions for sites from Washington DC to Houston to Los Angeles. This exhibition organized by the Memorial Art Gallery brings together 37 sculptures and models and 16 drawings from 2000 to 2010, as well as a video of the artist at work.

This exhibition is made possible by Presenting Sponsors Bank of America and the Mr. and Mrs. Raymond J. Horowitz Foundation for the Arts, Inc. Additional underwriting is provided by the Gallery Council of the Memorial Art Gallery, the Gouvernet Arts Fund of Rochester Area Community Foundation, the Thomas and Marion Hawks Memorial Fund, Nancy G. Curme and Nancy Turner. Support is also provided by Deanne Molinari, Bob and Joanne Giannini, the Elizabeth F. Cheney Foundation and Mann's Jewelers.



July 25–September 26, 2010 (exhibition party July 24)

Fourth Rochester Biennial

This biennial invitational showcases recent work by six regional artists—Ted Aub of Geneva (bronze sculpture), Anne Havens of Rochester (mixed media installations), Rick Hock of Rochester (digital imaging), Alberto Rey of Fredonia (painting and video), Lawrence M. "Judd" Williams of Spencerport (assemblage sculpture)

and Julianna Furlong Williams of Spencerport (painting). They were selected by director Grant Holcomb, director of exhibitions Marie Via and curator of education Marlene Hamann-Whitmore. In keeping with recent tradition, Havens was chosen on the strength of her entry in last summer's *Rochester-Finger Lakes Exhibition*.

This exhibition is sponsored by ESL Federal Credit Union and the Rubens Family Foundation.



October 17, 2010–January 2, 2011 (exhibition party October 16)

Psychedelic: Optical and Visionary Art Since the 1960s

From Op Art in the 1960s to the current explosion of dazzling abstraction, this nationally touring exhibition traces the development of a “psychedelic sensibility” in the art of the past 40 years. Organized by the San Antonio Museum of Art, *Psychedelic* showcases figurative and abstract works characterized by intense color and vivid imagery. The artists include such modern masters as Frank Stella, Deborah Remington, Robert Williams, Fred Tomaselli, Victor Vasarely and Ray Rapp.

This exhibition is made possible in part by ESL Federal Credit Union.

LOCKHART GALLERY

Through May 2, 2010

Rembrandt. Master Etchings from the Collection of Tobia and Dr. Morton Mower



This exhibition showcases 34 rare etchings loaned by Baltimore cardiologist Dr. Morton Mower and his wife, Tobia Mower, whose fascination with Rembrandt’s innovative techniques and mastery of printmaking led to the formation of their extraordinary private collection. The selection explores the versatility of Rembrandt’s style as well as the breadth of his subjects, which range from scenes of daily life, portraits, landscapes, and historical and biblical narratives. As Dr. Mower has noted, “Etching was the photography of Rembrandt’s day, and he gives us a window into both the everyday life and cosmopolitan themes that captured his imagination.”

Sponsored by an anonymous donor in honor and memory of the Rochester General Hospital Unit that served in WWII.

#

FROM TOP: Erik Parker, *Space Chase* (2006). Private collection, Los Angeles, Courtesy Honor Fraser Gallery. Rembrandt van Rijn, *Self-Portrait with Saskia* (1636). Collection of Tobia and Dr. Morton Mower.